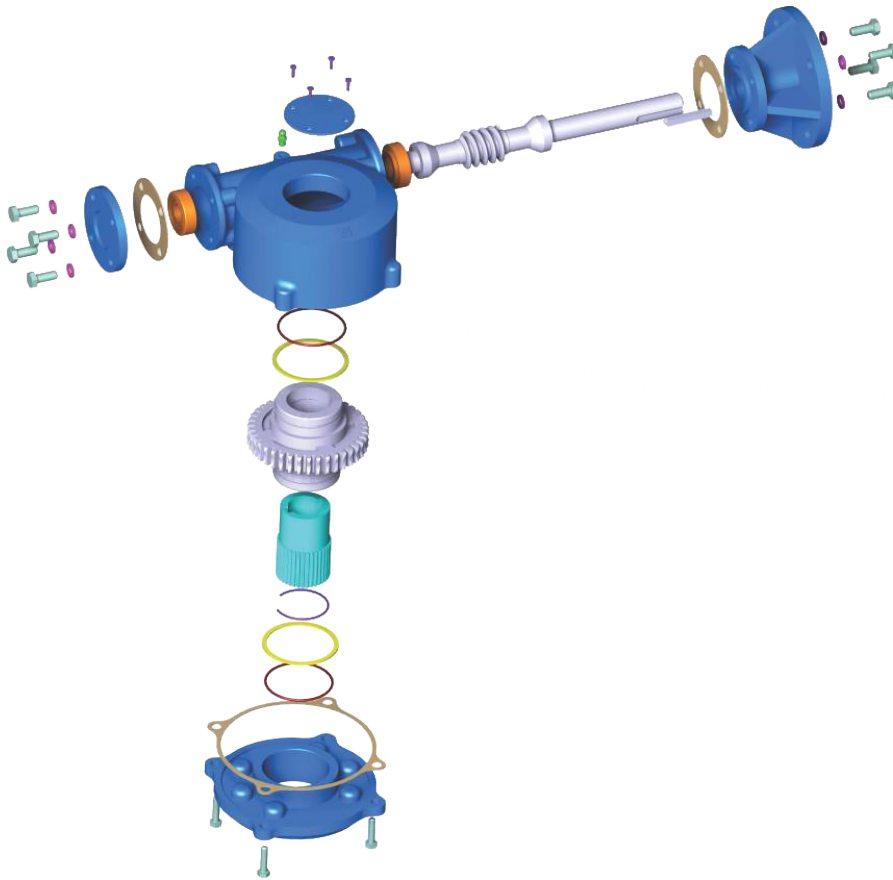




## 518 Series Multi-turn Worm Gear Operators with Spline for Electrical and Manual Operations



### Multi-turn Worm Gear Operators for Electrical and Manual Operations

Q-Tork 518 series gear boxes are designed for both Electrical and Manual operation. This type of gear boxes are designed for 360 degree rotation without end stop.

#### Application

518 Series multi-turn worm gear boxes are designed to operate Sluice valves, Balancing valves and Dampers

### Features & Benefits

- Spline bush provides accurate positioning - valve stem and worm wheel
- Manual  $\rightleftharpoons$  Electrical interchangeability
- Cast iron housing and cover
- Flange is provided for mounting of electric actuator
- Temperature range -30°C to +120°C
- Light weight with rugged design
- Maintenance free
- Environmental friendly high performance grease

### Optional

- Housing materials - Carbon steel, Stainless steel, Ductile iron
- Submersibility to IP67
- Worm wheel - Al bronze
- Stainless steel-Input shaft, handwheel and enclosed screws
- Can be made suitable for 90° and 180° operation

## Material Specifications

Sr. No	Job Description	Material Description	Standards
1	Housing	Cast Iron-FG 220	IS 210/ASTM A48 /40B/GG-20
2	Cover	Cast Iron-FG 220	IS 210/ASTM A48 /40B/GG-20
3	Worm Wheel	SG Iron-600/3	IS 1865 / ASTM A536 / GGG-60
4	Worm Shaft	EN-19	C55 / SAE-4140 / 42CrMo4 / ASTM A-29 / A-29M
5	Spline Bush	SG Iron-600/3	IS 1865 / ASTM A536 / GGG-60
6	Bearing	Standard	—
7	O-ring	Nitrile	—
8	Handwheel	MS	—
9	Drive Shaft	EN-19	C55 / SAE-4140 / 42CrMo4 / ASTM A-29 / A-29M

## Gear Box Selection Data

Sr.No	Model	Max. Output Torque Manual (Nm)	Max. Output Torque Electrical (Nm)	Gear Ratio	MA $\pm 10\%$	ISO-5211 Valve Mounting	ISO-5211 Actuator Mounting	Max Stem Acceptance Dia (mm)
1	QMW-0.5	500	360	21:1	6.6	F07	F07, F10	20
2	QMW-01	1000	700	39:1	12.3	F10	F07, F10	30
3	QMW-02	1700	1200	40:1	13.7	F12	F07, F10	38
4	QMW-04	3400	2400	40:1	13.4	F14	F10	45
5	QMW-07	6700	4800	52:1	16.9	F16	F14	75
6	QMW-14	13500	9600	54:1	17.1	F25	F14	90
7	QMW-28	27500	19200	53:1	17	F30	F16	115
8	QMW-36	36000	25600	57:1	18	F30	F16	125
9	QMW-56	56000	38400	52:1	16	F35	F25	140
10	QMW-76	76000	54000	53:1	16.7	F35	F16	170
11	QMW-108	108000	75600	53:1	16.4	F40	F30	190
12	QMW-143	143000	102000	54:1	17	F 48	F35	210

The information & specifications of this literature is believed to be accurate. It is supplied for informative purpose only and shall not be considered as guarantee or certificate for satisfactory result. As a part of continual improvement in its product design, specification and dimension is subject to change without notice. Should there be any question concerning this leaflet, the buyer / user should get in touch with Q-Tork Automation Pvt. Ltd. at any of its office locally / worldwide.

## Q-Tork Automation Pvt. Ltd.

Manufacturers of:

- Quarter-turn Worm Gear Operators • Manual Override Gear Operators
- Quarter-turn Worm Gear Operators for Electrical Actuation • Multi-turn Bevel Gear Operators
- Quarter-turn Worm Gear Operators with Spline Bush • Multi-turn Worm Gear Operator with Spline Bush



Works : Gat No # 1083/1B, Markal, Tal. - Khed, Pune - 412 105. Maharashtra, INDIA.  
 • cellular # +91 99 22 009715 • email # marketing@qtork.com • www.qtork.com